



Sam Altman and Lex Fridman

OpenAI CEO on GPT- 4, ChatGPT, and the Future of AI

In this podcast episode, host Lex Fridman and OpenAI CEO Sam Altman discuss the impact of AI on society.

Large language models (LLMs) such as GPT represent the latest breakthrough in artificial intelligence. People who use the chatbot ChatGPT engage in a conversation with a computer that feels like they are talking to a human being. LLMs have no real understanding of the world. And, no source of truth. They learn from vast amounts of internet data and may give you a good answer to a question, but they may also show you biased or false information or “hallucinate.” The advancement of AI is exciting, it is changing our lives and business at a fast pace, and it sure will impact how we learn. But for now, don’t rely on any large language model’s output without it being fact-checked by a subject-matter expert.

STEP 1

Have your team read the getAbstract summary of the Lex Fridman Podcast. To access the summary, click on the book cover.

STEP 2

Schedule a team meeting to discuss the questions.

STEP 3

Have a discussion with your team.

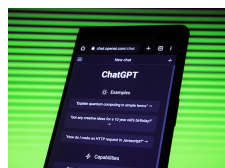
Discussion Questions

1. Can a machine define human knowledge? Will it make the leap from a box of facts to true wisdom?
2. Altman envisions people from all parts of the world coming together to agree on capabilities and boundaries of an ideal AI (base) model. Will people share a common vision?
3. Altman believes different states and institutions will then tailor the AI base model to fulfill specific needs, adhere to local laws and reflect local culture. What challenges and opportunities will this bring?
4. What jobs will AI replace and where will humans be needed more than ever?

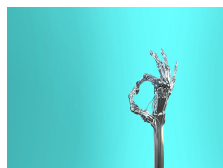
“The level of the increase in quality of life that AI can deliver is extraordinary. We can make the world amazing, and we can make people’s lives amazing. We can cure diseases. We can increase material wealth. We can help people be happier, more fulfilled.”

Sam Altman

Additional resources



ChatGPT and LLMs



Journal Article:
Chatbot, Where Are
You Headed?



getAbstract, Inc. 20900 NE 30th Ave., Suite 315, Aventura, FL 33180, USA +1 305 936 2626

getAbstract AG Alpenquai 12, 6005 Lucerne, Switzerland +41 41 367 5151

corporate@getabstract.com | www.getabstract.com